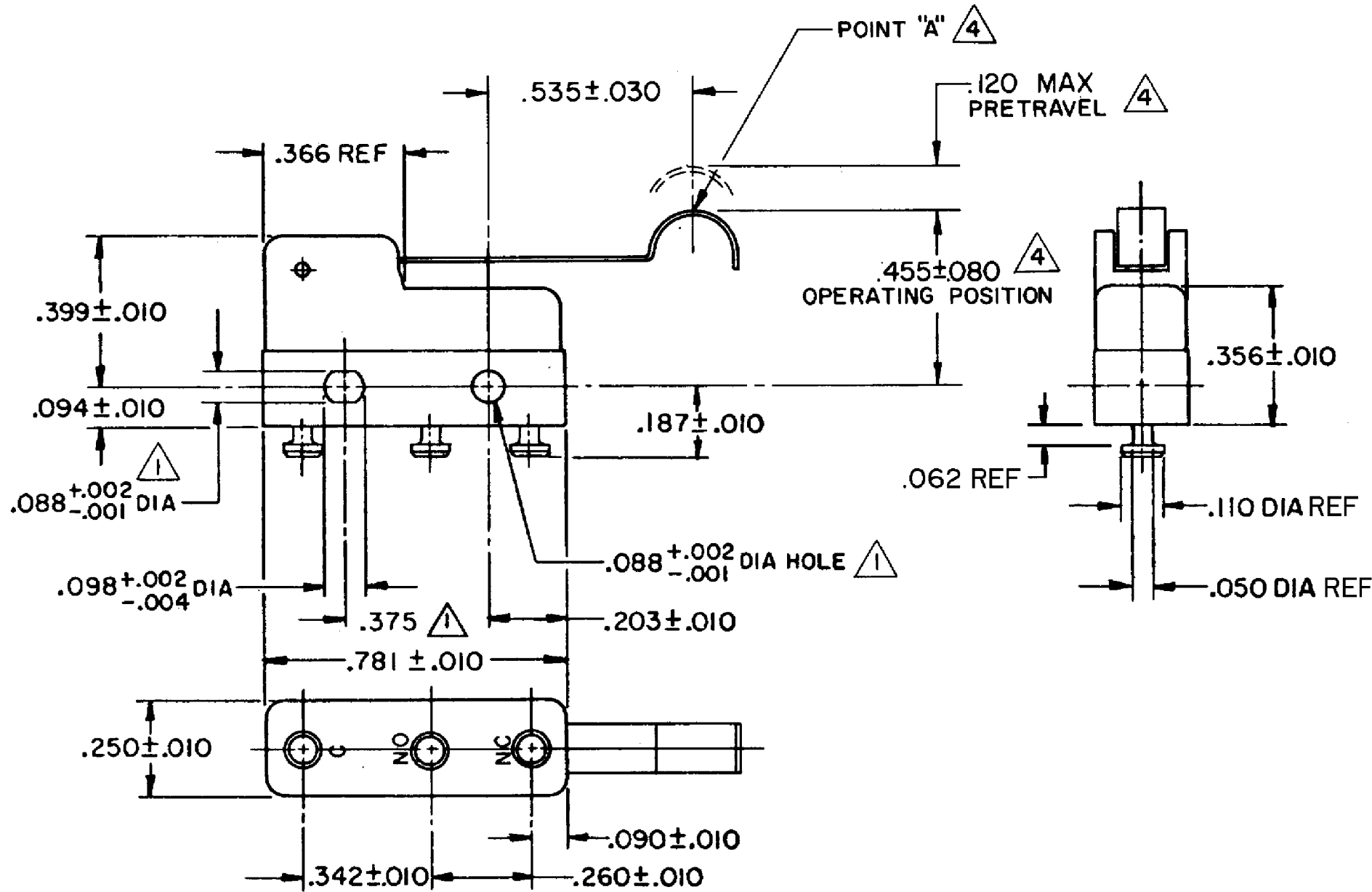
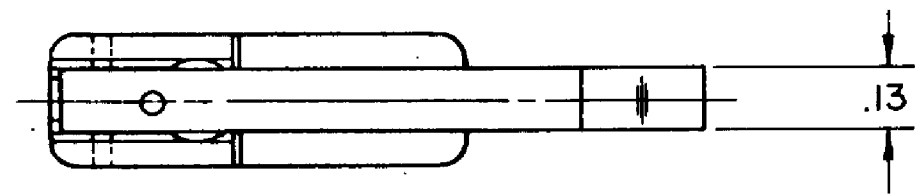


HONEYWELL PART NUMBER
311SM5-T
PRODUCT CODE TZA1300

REV	DOCUMENT	CHANGED BY	CHECK
5	0038113	PRS 12JUN08	BLR



- NOTE -
- 1 MOUNTING HOLES WILL ACCEPT PINS OR SCREWS OF .087 MAX DIA ON .375 ± .002 CENTERS
 - 2 SWITCH WILL WITHSTAND TEMPERATURE OF 250°F
 - 3 TERMINALS ARE PLATED FOR SOLDERING
 - 4 CHARACTERISTICS TAKEN AT POINT "A"

RELEASE NO.	SR - 11750
REPLACES	-

CHARACTERISTICS	4
OPERATING FORCE	30 GRAM MAX
RELEASE FORCE	5 GRAM MIN
DIFFERENTIAL TRAVEL	.027 MAX
OVERTRAVEL	.026 MIN

ELECTRICAL DATA	
CONTACT ARRANGEMENT SPDT	
30 VOLTS DC RATING	
	SEA LEVEL 50,000 FT
INDUCTIVE	3 AMP 2.5 AMP
RESISTIVE	5 AMP 5 AMP
MAXIMUM INRUSH 24 AMP	
APPROVALS	KEMA, CE 5A, 250V ~ T85 1E4
	UL, CSA 5A, 250 VAC ~

DESIGN UNITS: INCH
TOLERANCES UNLESS NOTED:
NO PLACE X ±
ONE PLACE .X ±
TWO PLACE .XX ±
THREE PLACE .XXX ±
FOUR PLACE .XXXX ±
ANGLES ±
THIRD ANGLE PROJECTION

DRAWN	VK	05 NOV 07
CHECK	RJ	05 NOV 07
THIS DRAWING COVERS A PROPRIETARY ITEM AND IS THE PROPERTY OF HONEYWELL. THIS DRAWING IS NOT TO BE COPIED OR USED WITHOUT THE PERMISSION OF HONEYWELL.		
INTERPRET PER ANSI Y14.5M-1982 OTHER HONEYWELL ENGINEERING STANDARDS MAY APPLY		
RASTER		

Honeywell			
TITLE SWITCH - BASIC			
SIZE	TYPE	DRAWING NAME	REV
B	I	311SM5-T	5
SCALE	-	WEIGHT .006 LB MAX	SHEET 1 OF 1